



Look Inside!

- Subscribe Print
- Subscribe Digital
- Gift: NR Print
- Gift: NR / Digital



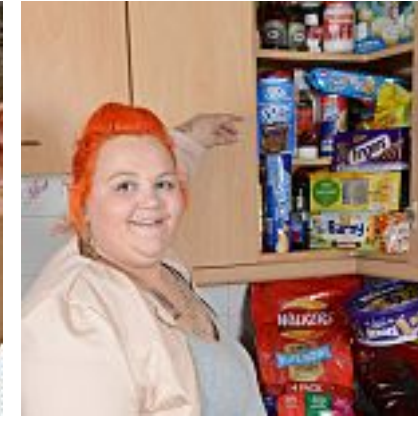
Kevin D. Williamson - Tuition Showdown



Andrew C. McCarthy - No, 'Prosecutorial Discretion' Does Not Justify Obama's...



Charles C. W. Cooke - Obama's Imperial Transformation Is Now Complete



Katherine Timpf - 350-Pound Woman: I'm Obese Because I Don't Get Enough Taxpaye...



Robert Griffin III Marries Rebecca Liddicoat



Tim McGraw & Faith Hill Share Big News About 'Divorce'

Promoted Links by Taboola

The Corner

The one and only.



- [About](#) | [Archive](#) | [E-Mail](#) | [RSS](#)

Former Obama Adviser: Gruber Was 'the Man' on Obamacare

By [Brendan Bordelon](#)

November 18, 2014 1:08 PM

Comments 10

- [Share](#) 8 | [Tweet](#) 20 | [g+](#) 0

Print | Text

Former Obama adviser Steve Rattner lamented the White House's response to the series of revealing comments made by Obamacare architect Jonathan Gruber, saying their attempt to deny any association with the MIT professor is hard to take seriously.

Rattner led a White House auto-industry task force in 2009 — the same year that Gruber helped the administration craft what would eventually become Obamacare. "Jonathan Gruber was — back in the day, in 2009 — the guru on health care," he told MSNBC's *Morning Joe* on Tuesday. "I remember that when I was in the White House, he was certainly viewed as an important figure in helping put Obamacare together."

"The problem is not that Gruber helped them put Obamacare together, because he was the man," Rattner continued. "The problem is what he's said in the last two weeks, and how the White House has handled it."

- [Share](#) 8 | [Tweet](#) 20 | [g+](#) 0

Print | Text

SUBSCRIBE TO NATIONAL REVIEW



Print



Digital



iOS



Google



Android

Committed to America.



BP's commitment helps keep America working.



Learn More



Our Commitment to America: Supporting the Economy

260,000

Total jobs supported

Nearly

\$50 billion

Invested over the last 5 years

\$147 billion

Economic value generated 2012



Janet Weiss
EP Alaska President